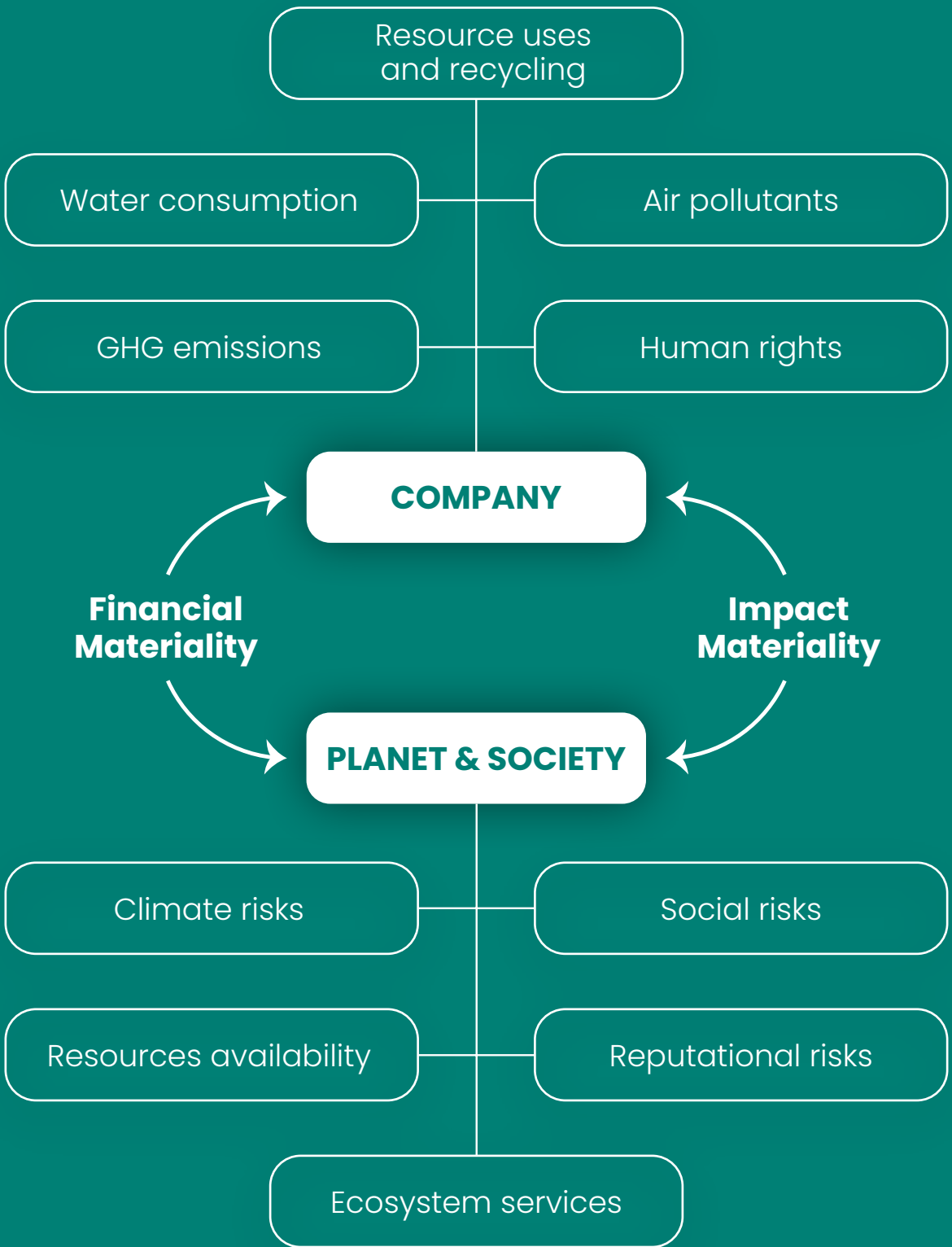


# **Optimise and streamline your Double-Materiality Assessment with Unifi**

# Why Double-Materiality Matters



Double materiality isn't just about ticking boxes – it's about securing your company's future by addressing the big issues that affect both sustainability and financial performance.

**At Unifi, we understand the complexities of aligning your strategic goals with ESG imperatives. Our streamlined process ensures that you capture all critical material issues without overwhelming your resources.**



# Our Approach

Our streamlined process ensures that you receive top-tier insights without unnecessary costs. We offer transparent pricing with options to match your budget and timeline. We follow a 4-step process that delivers results in 6-8 weeks.



## Desk Top Review

We start by analysing your company & sector's key issues to set a strong foundation.



## Materiality Workshops

We engage your senior leadership in identifying and prioritizing material issues through interactive and iterative sessions.



## Roadmap Development

We collaborate with you to create a clear, actionable roadmap tailored to your company's needs.

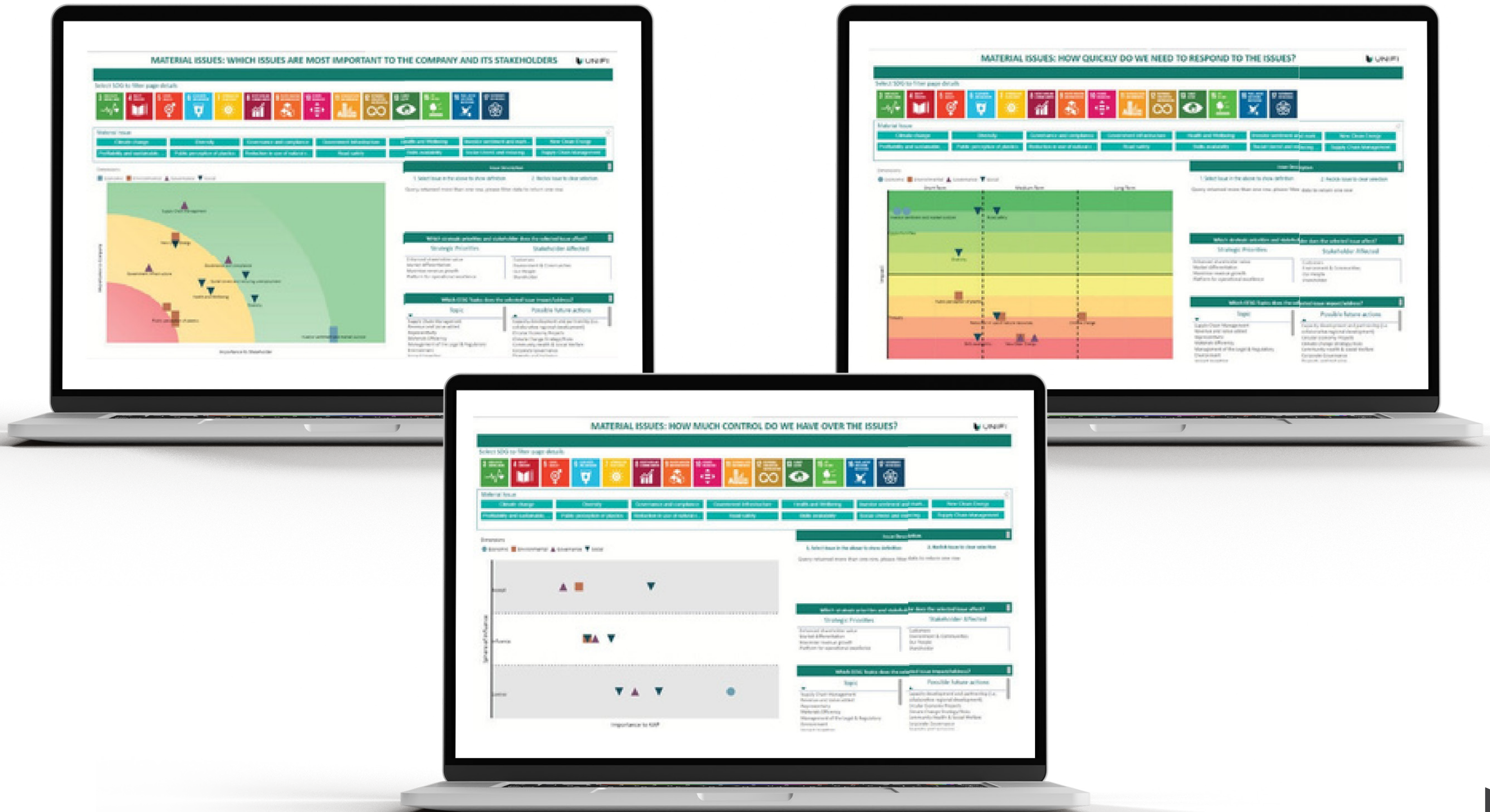


## Comprehensive Reporting

We provide you with a detailed report that guides your next steps, from strategy to implementation to tracking.

Whether you prefer in-person engagement, a hybrid approach, or entirely online sessions, Unifi offers flexible options that align with your team's availability and preferred working style.

# Interactive Dashboards



# Ready to Simplify Your ESG Strategy? Let's Get Started.



info@unifi.works



www.unifi.works