

Finding the Optimal Blend of Disclosure Frameworks with Unifi

The Challenge

Companies today are under pressure to meet various ESG and sustainability standards, but the challenge often lies in deciding which frameworks to follow and how to align data for multiple reports.

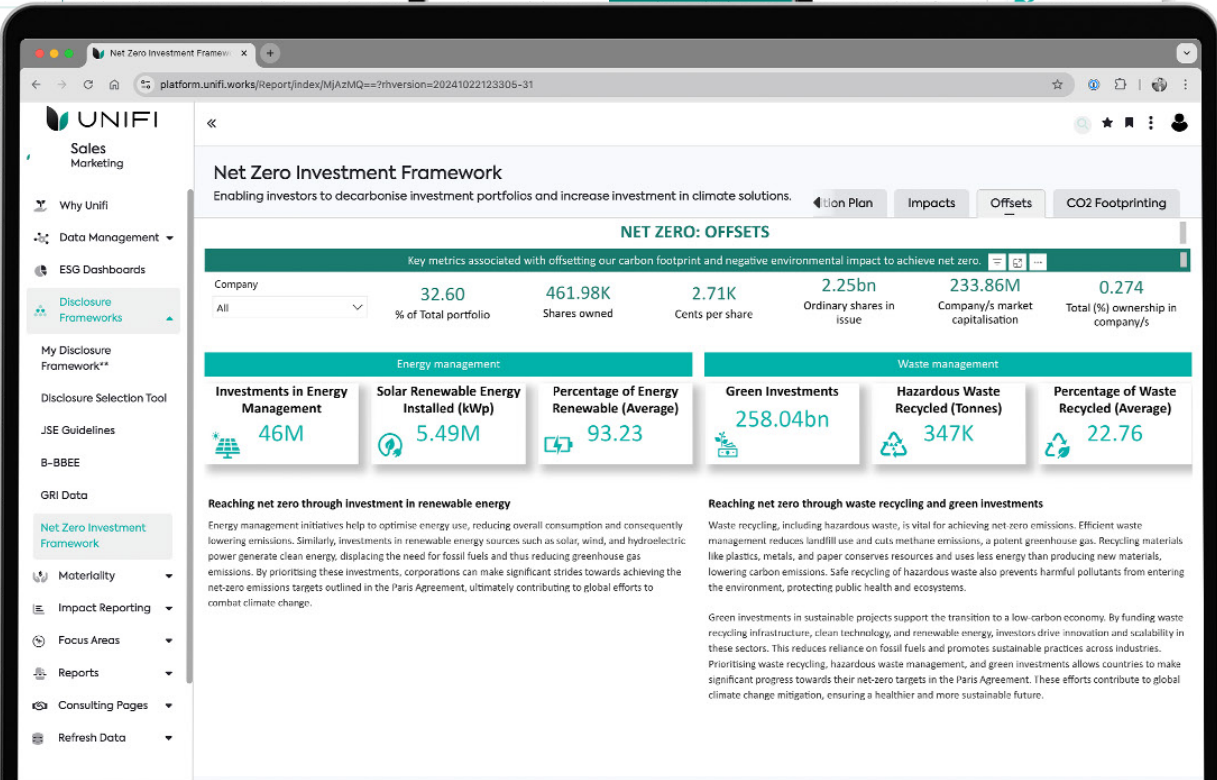
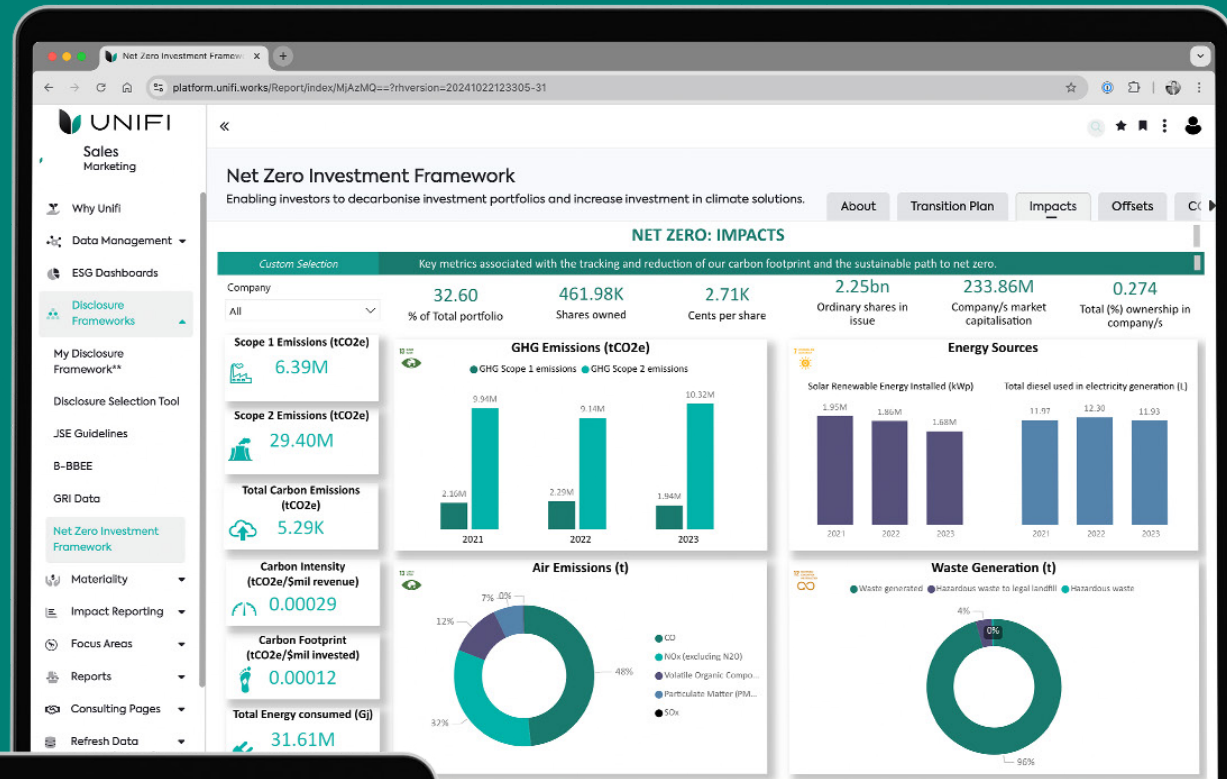
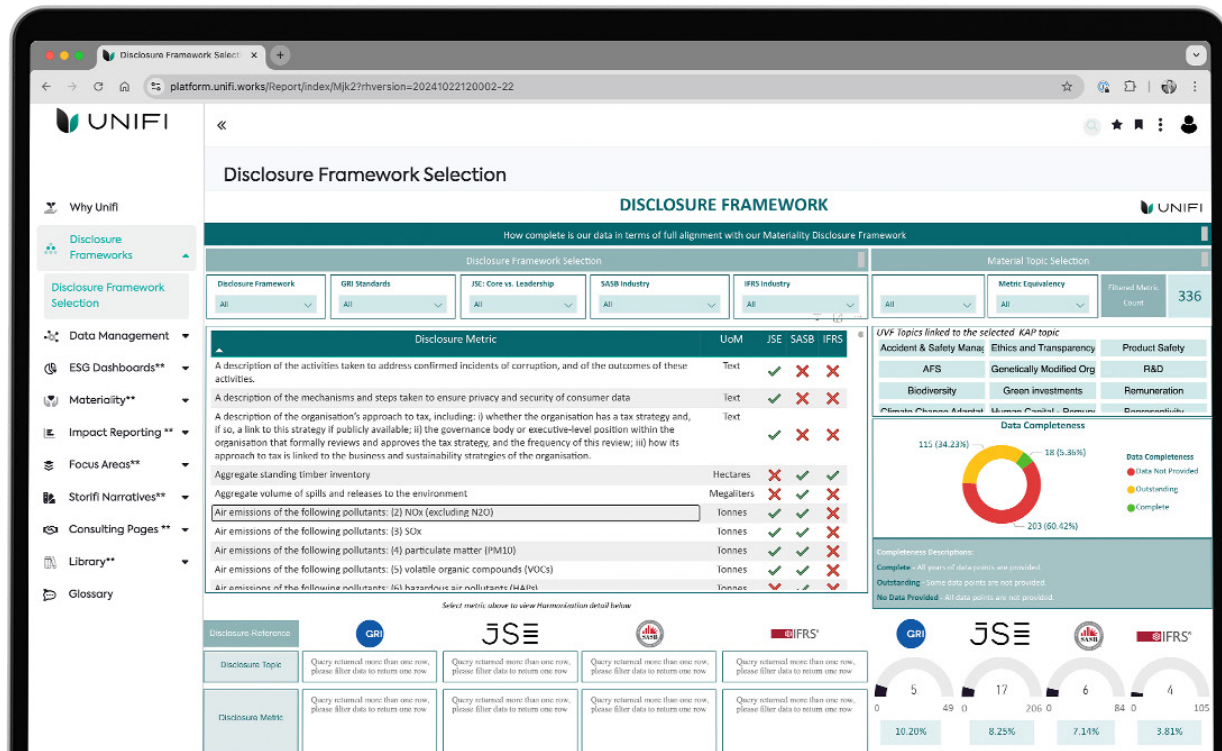
Unifi simplifies this with a tech-enabled solution, using your existing data to comply with frameworks like GRI and SASB through the Unified Value Framework (UVF).

Think of it as a “Rosetta Stone” for ESG reporting, which lets you multi-purpose your data easily.

Many companies struggle with choosing which frameworks are relevant to their business goals and aligning data across different standards. Traditional methods of compliance involve manual processes that are slow and error-prone.

Unifi steps in with a streamlined, tech-powered approach that automates much of this work, saving time and reducing complexity.





Our Solution

Unifi offers:

Framework Selection

We help you choose the right frameworks based on your business priorities.

Data Preparation

The platform ingests your existing data, formats it, and aligns it with the chosen standards, drastically reducing manual work.

Automation

Unifi automates updates to disclosures, so as frameworks evolve, your reports stay compliant with minimal effort.

Why **Unifi**?

Leverage Your Data

No need to start from scratch—Unifi uses your current data and maps it to multiple frameworks.

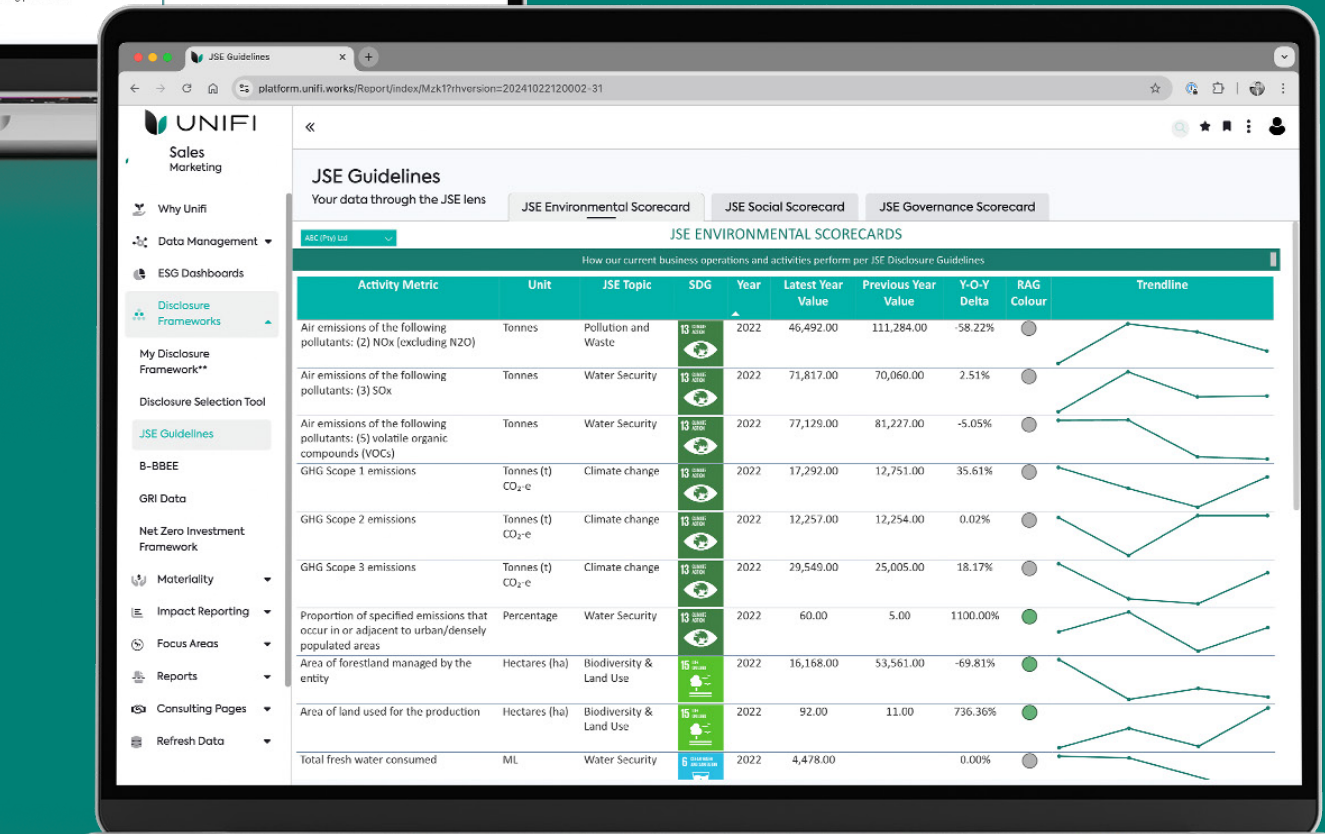
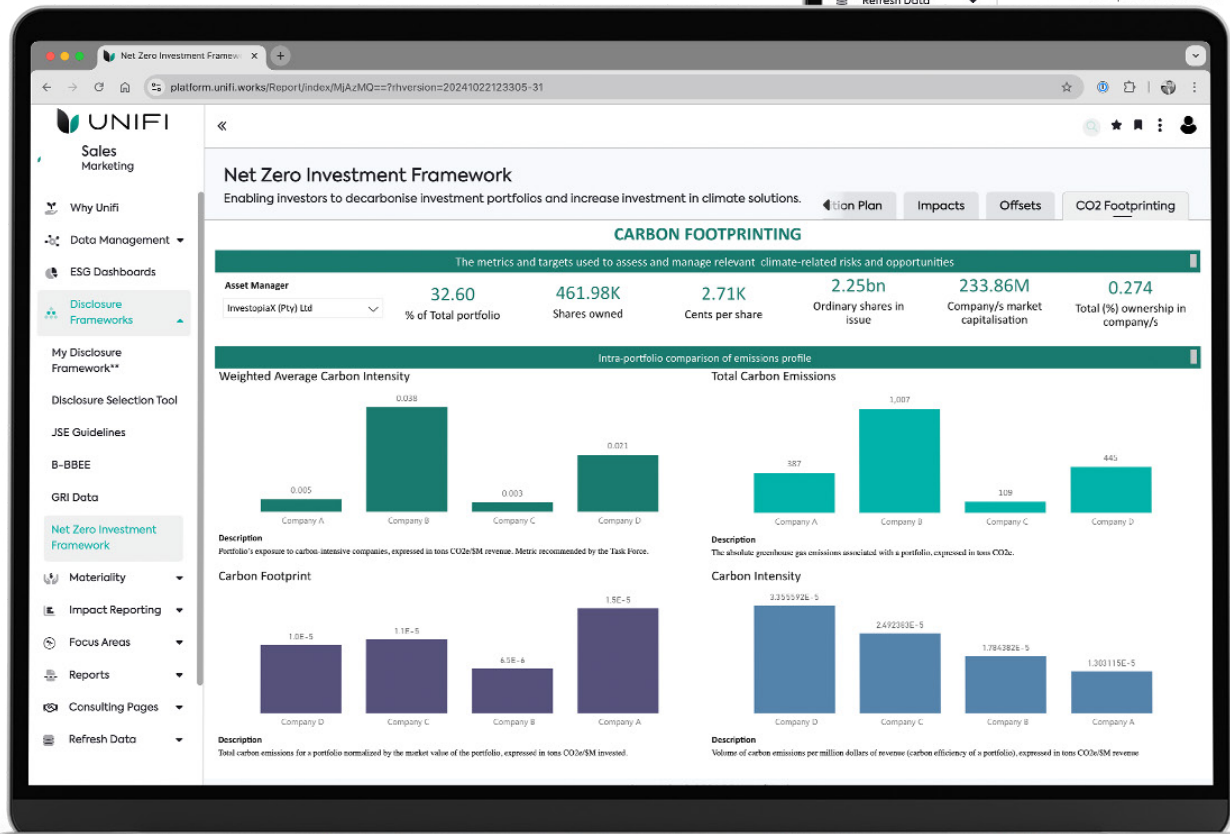
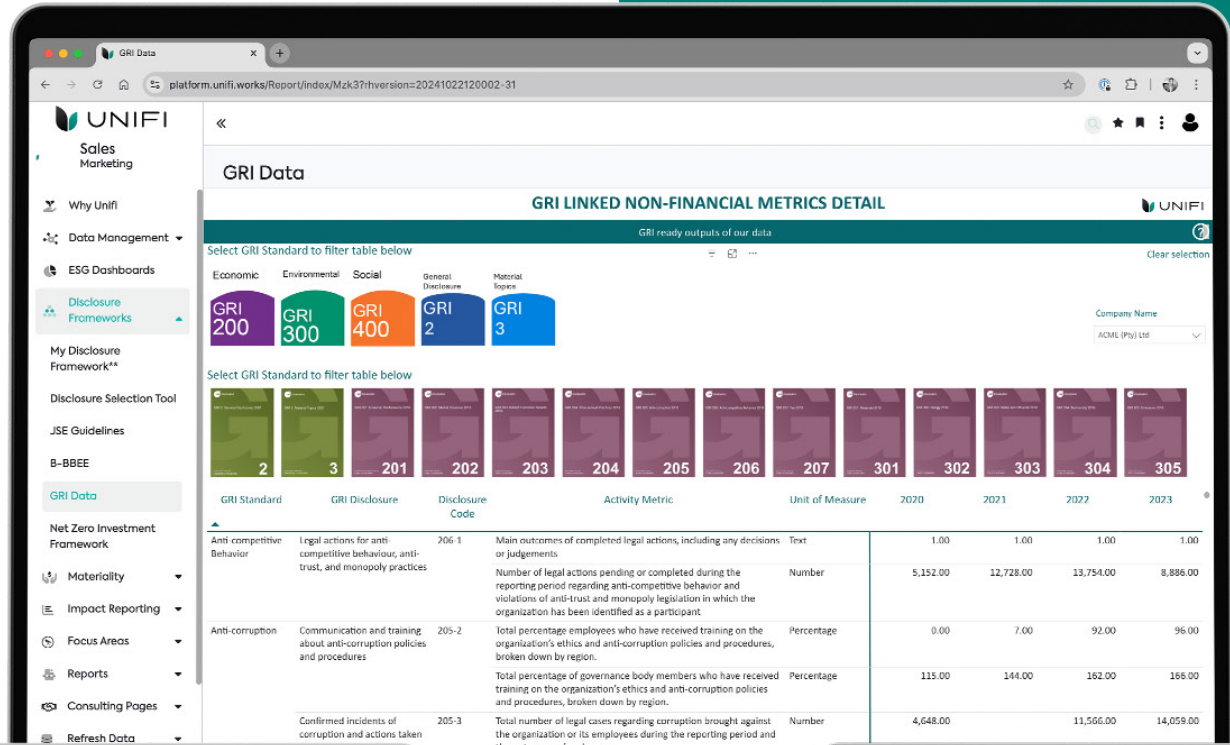
Automated Reporting

Forget about manual updates. Unifi ensures your reporting is always accurate and up-to-date.

Flexible & Future-Proof

As standards evolve, Unifi keeps your reports aligned without extra hassle.





Framework Selection

Tailored guidance on choosing the right disclosure standards like GRI and SASB.

Data Alignment

Automatically formats your data into compliant reports, ready for submission.

Unifi takes the complexity out of managing disclosure frameworks, allowing you to focus on showcasing your sustainability efforts with confidence.



**Ready to simplify your
ESG reporting? Get in touch
with Unifi today.**



info@unifi.works



www.unifi.works